





Space for Events
Main Hall
Side Hall

Foyer
Spree Terrace & Outdoor Premises
Ateliers

Cube
Deck
Studios

Services
Information
Ground Plans

radialsystem

Radialsystem was founded in 2006 as a trailblazing space for various arts disciplines to engage with one another. It is among the most extraordinary event locations Berlin has to offer.

Dating back to the early 20th century, this converted industrial monument pairs impressive brick architecture with the transparent elegance of two new structures made of glass, steel, and exposed concrete, as designed by architect Gerhard Spangenberg.

The versatility and flexibility of its premises, as well as the inspiring atmosphere and professionalism with which it plans and executes events, all have contributed to the development of Radialsystem as a premier venue for politics, business, science, and media over a very short period of time. Conferences, receptions, and award ceremonies are some of the myriad events that take place here, exquisitely situated directly on the banks of the Spree.

A resonating chamber for artistic, cultural-political, and social event formats and discourses, Radialsystem regards itself as an open space for social interaction that invites people to engage, talk, or simply linger.



radialsystem





Space for Events

Main Hall
Side Hall

Foyer
Spree Terrace & Outdoor Premises
Ateliers

Cube
Deck
Studios

Services
Information
Floor Plans

Space for Events

Situated directly on the Spree, the building offers six floors covering approximately 2,500 m² of versatile event space, from the erstwhile machinery hall located in the historic building (600 m²) to the glass cube (50 m²) which affords a view of the Fernsehturm and the Rotes Rathaus. Sprawling outdoor spaces that hug the waterfront invite you to linger – spectacular sunsets at no extra cost.

We can accommodate anything from large conferences with a variety of event formats for up to 800 guests to conference plenary sessions of 500 people with adjacent workshops for smaller groups – we will cater to the individuality of your event with the utmost flexibility and a comprehensive range of services.

Main Hall (Halle)





Main Hall (Halle)





Main Hall (Halle)





Space for Events
Main Hall
 Side Hall

Foyer
 Spree Terrace & Outdoor Premises
 Ateliers

Cube
 Deck
 Studios

Services
 Information
 Floor Plans

Main Hall (Halle)

With impressive dimensions, historical industrial architecture, and sweeping arched windows, the former machinery hall also boasts a preserved original crane bridge. Now a protected historical monument, it continues to represent the „heart“ of Radialsystem today.

The Main Hall makes up Radialsystem’s largest space with a surface area of 600 m². Located on the ground floor, it is accessible from the Foyer and the adjoining Side Hall (Saal). An ascending platform accommodates seating for up to 260 individuals, all of whom enjoy perfect acoustics and sightlines, whether they are sitting in the first or the last row. If necessary, the platform can be completely dismantled and the number of seats at ground level increased to 500. With its special ambiance, the Main Hall is also ideally suited for formal receptions and banquets.

An expansive delivery entrance in the immediate vicinity of the entryway enables ground-floor delivery directly into the Hall.

Base area	578 m ² (ca. 6,221 square feet) 31,56 m x 16,78 m / 20,20 m (front / back area)
Height	10,89 m (underneath the spreader bars 9,58 m)
Grandstand	13 m (W) x 17,85 m (D) 12 rows with 21 places each
Supply doors	3,42 m (W) x 3,56 m (H)
Level / access	Ground floor / accessible
Seating arrangements	Row seating: with grandstand max. 450, without grandstand max. 520 Pers Parliamentary seating: 240 Pax
Technical equipment	Extensive technical equipment / numerous hanging options (details on request)
Special feature	Protected historical monument / sweeping arched windows / historical crane bridge
Electricity	Shockproof sockets / 16, 32 and 63 Ampère
Flooring	Wooden floor / dark brown
Restrooms	Sanitary facilities / separate accessible WC (in the foyer)



Side Hall (Saal)





Side Hall (Saal)





Side Hall (Saal)



© radiasystem



© Phil Dera

© Phil Dera



Space for Events
Main Hall
Side Hall

Foyer
Spree Terrace & Outdoor Premises
Ateliers

Cube
Deck
Studios

Services
Information
Floor Plans

Side Hall (Saal)

As part of Radialsystem’s restoration in 2005-2006, and in accordance with conservation standards, the historical parts of the former pumping station were reinforced by modern components, exposed concrete walls, and columns. The result is a ground floor hall covering 400 m², and faces south. A double-leaf gate opens directly onto the Spree Terrace, allowing for easy ground-floor delivery of technology and equipment. Three large south-facing historical arched windows let in a great deal of light, but the space can also be darkened upon request.

The Side Hall is suited to a wide range of uses – whether a catering area for large conferences, a lecture room with theatre style seating, an informal standing reception or a gala dinner on a smaller scale, the Side Hall can meet any requirement.

Base area	394 m ² (4,240 square feet) 13,50 m x 24,60 m
Height	6,98 m (7,77 m between the floor joists)
Supply doors	3,22 m (W) x 3,60 m (H)
Level / access	Ground floor / accessible
Seating arrangements	Standing reception: max. 350 Pax Row seating: max. 300 Pax Parliamentary seating: 160 Pax Formal dinner seating: max. 240 Pax (ten per round table)
Technical equipment	Extensive technical equipment / numerous hanging options (details on request)
Special feature	Protected historical monument / sweeping arched windows
Electricity	Shockproof sockets / 16 and 32 Ampère
Flooring	Wooden floor / light colored
Restrooms	Sanitary facilities / separate accessible WC (in the foyer)



Foyer





Foyer

Space for Events
Main Hall
Side Hall

Foyer
Spree Terrace & Outdoor Premises
Ateliers

Cube
Deck
Studios

Services
Information
Floor Plans

As soon as you enter the building, you are greeted with a thrilling juxtaposition of the old and the new in Radialsystem's light-flooded Foyer. The bar, made of cool exposed concrete, stands parallel to the hallway and marks the centre of the extensive glass structure. And just beyond the bar, the remains of an historical wall of the old pumping station towers above, spanning three floors.

The Foyer provides access to both the Main Hall (Halle) and the Side Hall (Saal) and leads due south directly out onto the Spree Terrace. All five upper floors are accessible from the Foyer by stairs and/or elevator.

Base area
Dimenisons
Access

135 m² (ca. 1,453 square feet)
32,67 m x 4,13 m (including bar)
Main entrance Holzmarktstraße /
ground floor / accessible

Restrooms

Sanitary facilities / separate accessible WC
(in the foyer)



Spree Terrace & Outdoor Premises





Spree Terrace & Outdoor Premises



© radiasystem

© Phil Dera

© Phil Dera



Space for Events
Main Hall
Side Hall

Foyer
Spree Terrace & Outdoor Premises
Ateliers

Cube
Deck
Studios

Services
Information
Floor Plans

Spree Terrace & Outdoor Premises

Sun-drenched waterfront: Radialsystem's sprawling outdoor spaces are perfect for summer parties, barbecue buffets, or as an outdoor lounge area for a larger event – spectacular sunsets at no extra cost!

The Spree Terrace and its adjacent lawns also offer the space to complement and expand our premises with pavilions or gala tents.

Our 42m long landing stage allows direct access from the water if you would like to offer your guests an unforgettable arrival or departure, integrate a boat trip into your event programme, or make use of a special floating workshop room.

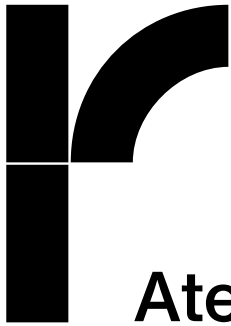
Spree Terrace

Base area	ca. 450 m ² (ca. 4,843 square feet)
Dimensions	ca. 45 m x 10 m
Level / access	South side / accessible via foyer, outdoor premises and via the boat landing / restrictedly accessible due to the historical paving
Seating arrangements	Summer months on the Spree: 20 tables, 6 chairs each Standing reception: max. 400 Pax
Pier	48 meters long approved for all common passenger vessels
Green area	as lounge area or for additional summer seating
Electricity	Shockproof sockets / 16 und 32 Ampère
Flooring	Historical paving
Restrooms	Sanitary facilities / separate accessible WC (in the foyer)



Ateliers





Space for Events
Main Hall
Side Hall

Foyer
Spree Terrace & Outdoor Premises
Ateliers

Cube
Deck
Studios

Services
Information
Floor Plans

Ateliers

On the 1st floor of the new wing, there are five bright ateliers to choose from, with sizes ranging from 13-42 m². These may be used individually or in combination and are extremely versatile – they can host workshops, meetings or interviews, or can serve as production offices, backstage areas or space for catering crews.

Base area	ca. 230 m ² (ca. 2,75 square feet)
Atelier A	ca. 42 m ²
Atelier B	ca. 13 m ²
Green Room	ca. 36 m ²
Atelier C	ca. 13 m ²
Atelier D	ca. 30 m ²
Access	Main staircase and elevator separate staircase
Restrooms	2 WCs and one shower room with 6 open showers and 2 cabin-showers

W Cube





Space for Events
Main Hall
Side Hall

Foyer
Spree Terrace & Outdoor Premises
Ateliers

Cube
Deck
Studios

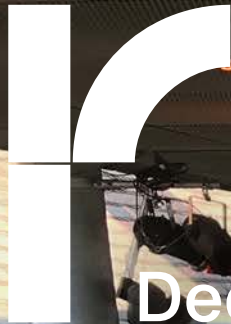
Services
Information
Floor Plans

Cube

The new wing's two-storey Cube captivates – its transparent structure provides impressive views in all directions. An additional gallery level, accessed via a spiral staircase, extends the ceiling height to over six metres, giving the 50 m²-room a distinctive feeling of spaciousness without removing its intimate character.

The Cube is just as ideal for exclusive meetings as it is for workshops or press conferences.

Base area	ca. 50 m ² (ca. 538 square feet)
Height	6,37 m (front area)
Level / access	2nd floor 3rd floor (gallery) main staircase and elevator
Seating arrangements	Standing reception: 50 Pax Row seating: 40 Pax Parliamentary seating: 26 Pax
Electricity	Schuko
Restrooms	One sanitary facility with direct access



Deck





Space for Events
Main Hall
Side Hall

Foyer
Spree Terrace & Outdoor Premises
Ateliers

Cube
Deck
Studios

Services
Information
Floor Plans

Deck

On top, the Deck: A 400 m² open-air terrace on the 3rd floor of the building offers both a magnificent view of the water and a protective roof overhead. The Deck is accessible from two sides by stairs and is ideal for exclusive receptions, smaller dinners, or as a summer workshop room as part of a conference.

Base area	a. 350 m ² (ca. 3,767 square feet)
Dimensions	ca. 22 m x 16 m
Level / access	3rd floor / two separate staircases as well as two elevators / not accessible
Seating arrangements	Standing reception: 100 Pax Row seating: 100 Pax Formal dinner seating: 100 Pax (10 per round table)
Electricity	Shockproof sockets / 16 and 32 Ampère
Flooring	Terrace timber planks
Restrooms	Sanitary facilities (ground floor / foyer)



Studios





Space for Events
Main Hall
Side Hall

Foyer
Spree Terrace & Outdoor Premises
Ateliers

Cube
Deck
Studios

Services
Information
Floor Plans

Studios

Three spacious studios are located on the top two floors of the southern-facing new wing. Glass fronts offer spectacular views of the Spree and the Berlin skyline both by day and at night.

Studio A occupies the entire 5th floor with 400 m² of space. Studios 1 and 2 on the 4th floor are both 200 m² in size and are connected by doors, but can also be used and accessed independently of each other via two different staircases and elevators.

All studios may be darkened upon request. A glass lamella front protects the room from direct sunlight. Studio 1 also has a balcony which spans out from a recess and faces southwest. Studio A is regularly used as a rehearsal room and is therefore only available upon request.



Space for Events
Main Hall
Side Hall

Foyer
Spree Terrace & Outdoor Premises
Ateliers

Cube
Deck
Studios

Services
Information
Floor Plans

Studios 1

Base area 196 m² (ca. 2,109 square feet)
Height 2,85 m (2,77 meters underneath the concrete girders)
Level / access 4th floor / staircase and elevator
Seating arrangements Standing reception: 100 Pax
Row seating: 100 Pax
Parliamentary seating: 80 Pax
Special feature Glass front windows with view of the spree
Electricity Shockproof sockets / 32 Ampère
Flooring Polished mastic asphalt (black)
Restrooms Sanitary facility with WC and shower / direct access from the studio

2

Base area 196 m² (ca. 2,109 square feet)
Height 2,85 m (2,77 meters underneath the concrete girders)
Level / access 4th floor / staircase and elevator
Seating arrangements Standing reception: 100 Pax
Row seating: 100 Pax
Parliamentary seating: 80 Pax
Special feature Glass front windows with view of the spree
Electricity Shockproof sockets / 32 Ampère
Flooring Wooden sprung floor / covered with black dance-carpet
Restrooms Sanitary facility with WC and shower / direct access from the studio

A

Base area 394 m² (ca. 4,240 square feet)
Height 2,85 m (2,77 meters underneath the concrete girders)
Level / access 5th floor / two staircases and two elevators
Seating arrangements Standing reception: 100 Pax
Row seating: 100 Pax
Parliamentary seating: 100 Pax
Special feature Glass front windows with view of the spree
Electricity Shockproof sockets / 32 Ampère
Flooring Wooden sprung floor / covered with black dance-carpet
Restrooms Two sanitary facilities with one WC and one shower each / direct access from the studio



Space for Events
Main Hall
Side Hall

Foyer
Spree Terrace & Outdoor Premises
Ateliers

Cube
Deck
Studios

Services
Information
Floor Plans

Services

Our entire team and equipment are at your disposal: technology, catering, furnishings, and personnel – you will receive everything you need from one source and thus benefit from our experience and expert coordination.

However, we are more than happy to support you exclusively in whichever areas you require. Or you can simply rent our rooms and bring in anything else you desire.

Technical Equipment

Whether you need an empty room or want to realise an elaborate multimedia concept, we will execute your event to the highest level. At Radialsystem, you not only have comprehensive technical equipment at your disposal, but our highly qualified technical team as well, who will contribute to the execution of your event their experience and creativity drawn from the entire scope of our productions.

Catering

From lunch buffets designed with loving care to large-scale receptions and gala dinners, our certified organic caterer Organiced Kitchen pairs traditional methods of preparation with avant-garde cuisine, guaranteeing you a high-quality gastronomic accompaniment to your event – made exclusively with regional organic products and distributed, of course, with impeccable service.

Furnishings

Whether receptions or lounge areas, catering, conferences or workshops, we adapt to your needs and, if desired, can design furniture and decoration arrangements with qualified partners. Our premises can be beautifully complemented or extended with pavilions or gala tents set up on our sprawling outdoor space. We can provide a cloakroom for smaller events in the Side Hall and a cloakroom tent for larger conferences or celebrations.

Personal

Upon request, we can take over any and all services related to your event or supplement your team in individual areas with our personnel, all of whom are friendly, committed, and competent.



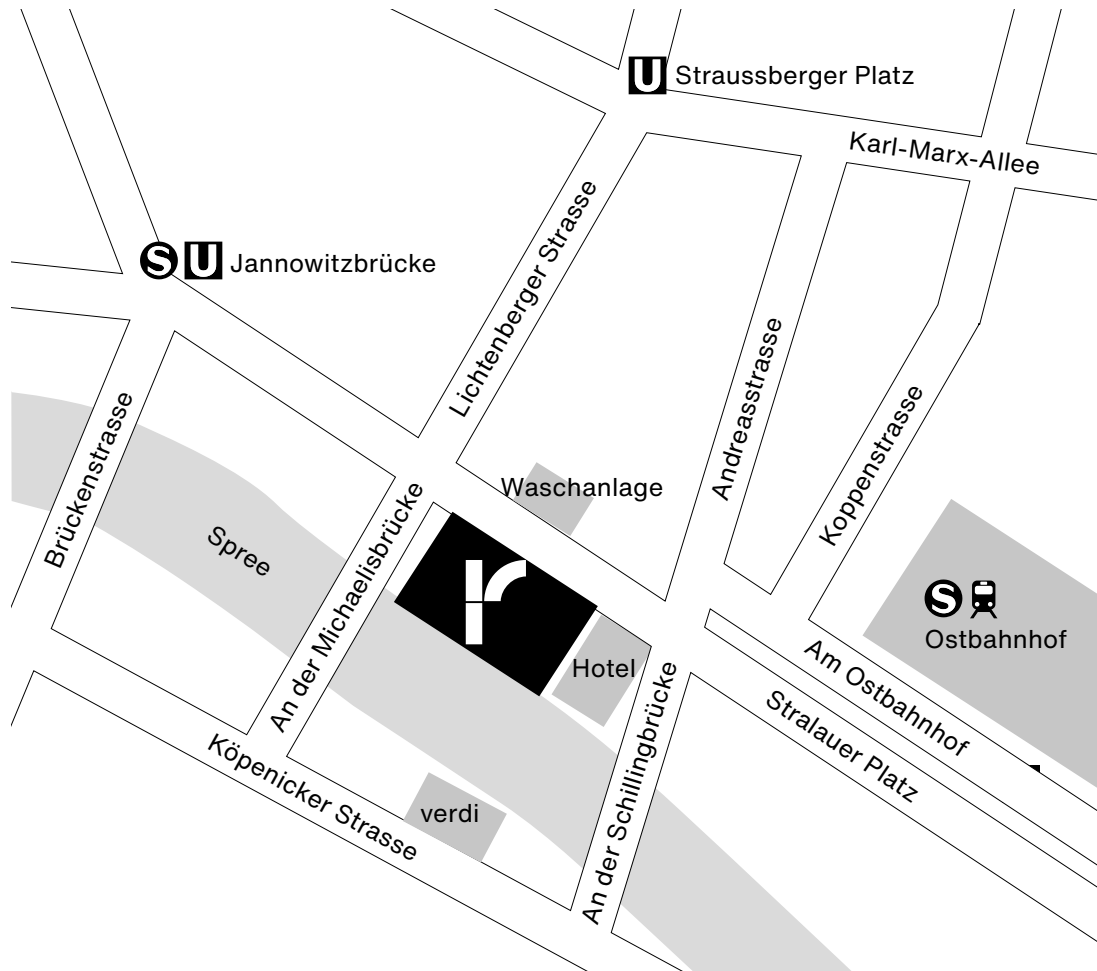
Space for Events
Main Hall
Side Hall

Foyer
Spree Terrace & Outdoor Premises
Ateliers

Cube
Deck
Studios

Services
Information
Floor Plans

Information



Directions

Radialsystem
Holzmarktstraße 33
10243 Berlin

Accessibility by public transport

The closest public transport station to Radialsystem is Ostbahnhof, which can be reached by S-Bahn, bus, regional train, and long-distance trains. The walk from Ostbahnhof takes about 5 minutes.

Parking

Six parking spaces are available on Radialsystem premises. You will find further parking facilities at Ostbahnhof.

Accessibility

Radialsystem guarantees unrestricted access to all event rooms (with the exception of the Deck). An accessible toilet can be found in the Foyer.

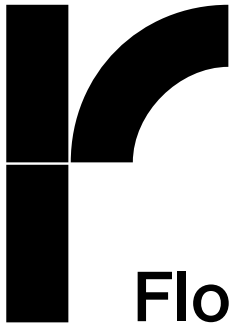
Radialsystem underwent evaluation in 2017 and became certified as „partially unrestricted for people with mobility impairment(s)“. We would be happy to send you the report with more detailed information.

Contact

We look forward to your enquiry and would be delighted to arrange a personal consultation.

Jonas Steckel (Head of)
Stefanie Herrmann (on parental leave)
Rosa Toplak
Lucie von Treskow

You can reach us by phone at +49 (0)30 288 788 533 or by e-mail at vermietung@radialsystem.de.



Space for Events
Main Hall
Side Hall

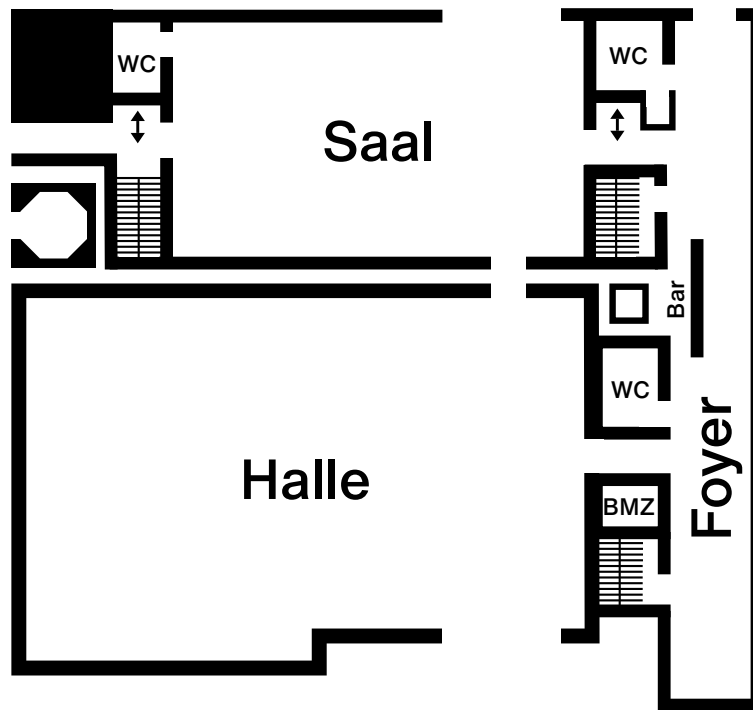
Foyer
Spree Terrace & Outdoor Premises
Ateliers

Cube
Deck
Studios

Services
Information
Floor Plans

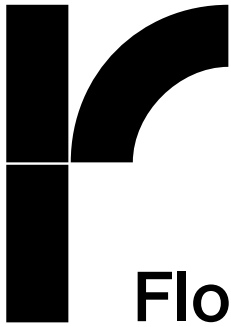
Floor Plans

Ground Floor: Foyer, Main Hall (Halle), Side Hall (Saal)



1. Floor: Ateliers





Space for Events
Main Hall
Side Hall

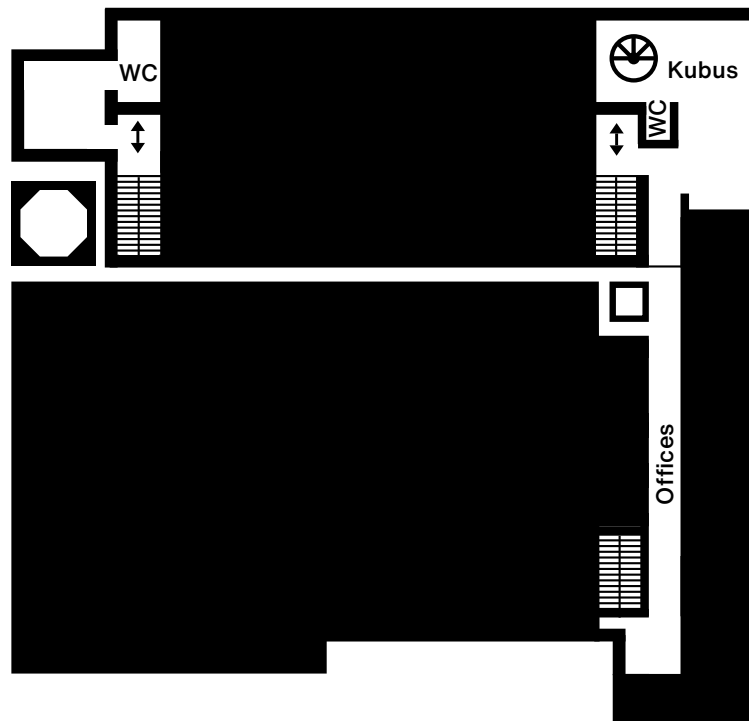
Foyer
Spree Terrace & Outdoor Premises
Ateliers

Cube
Deck
Studios

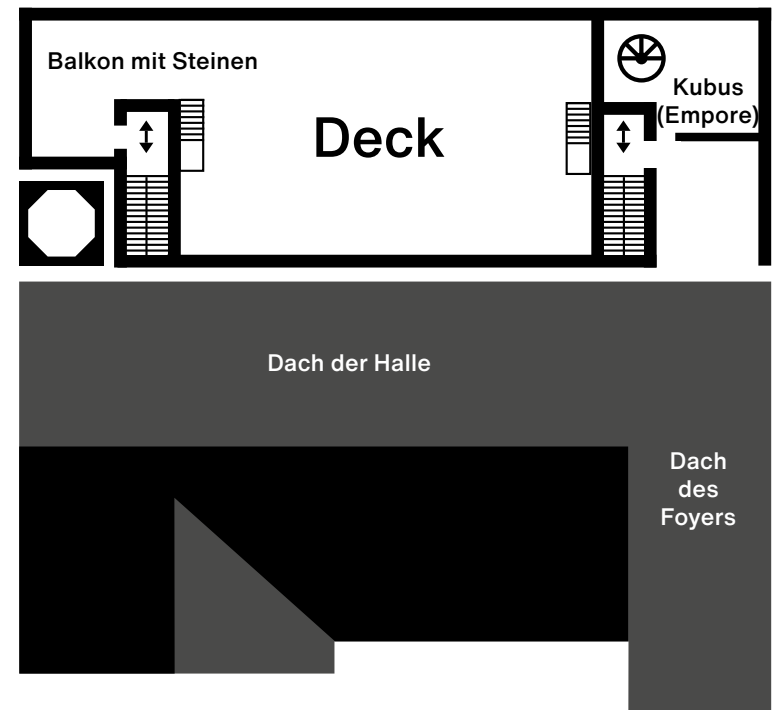
Services
Information
Floor Plans

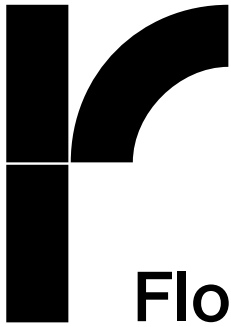
Floor Plans

2. Floor: Cube and Offices



3. Floor: Deck and Cube





Space for Events
Main Hall
Side Hall

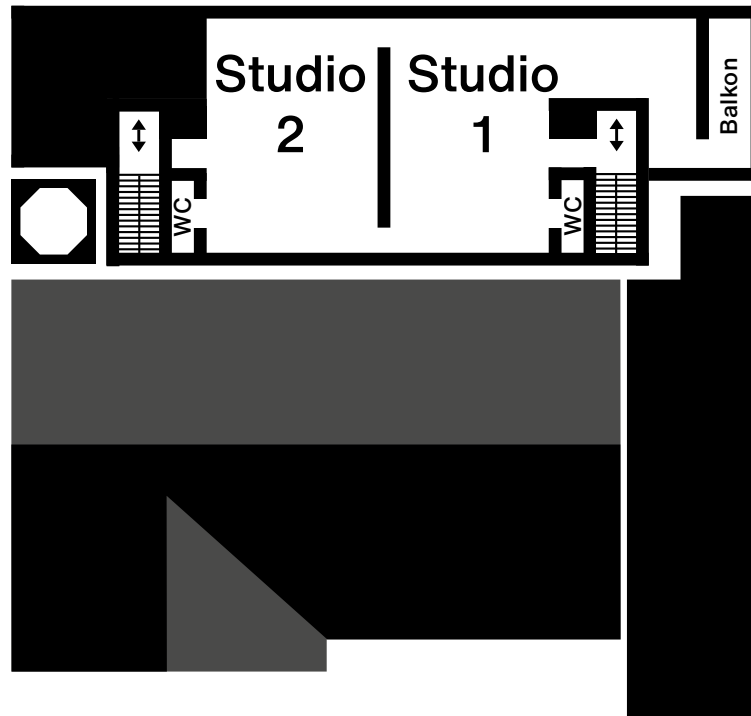
Foyer
Spree Terrace & Outdoor Premises
Ateliers

Cube
Deck
Studios

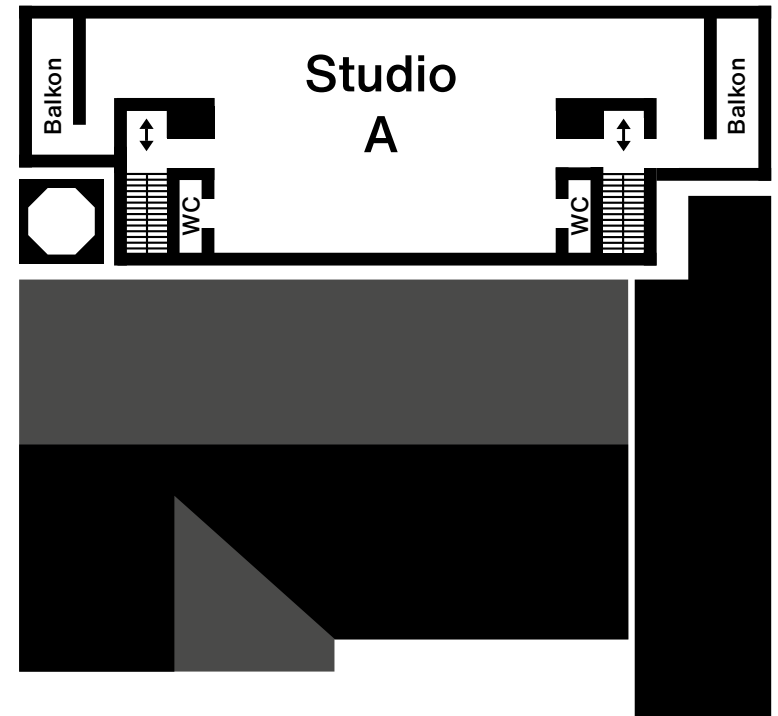
Services
Information
Floor Plans

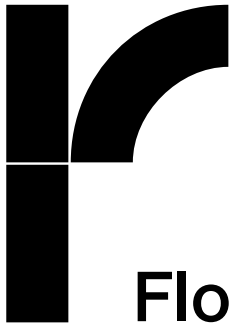
Floor Plans

4. Floor: Studio 1 and 2



5. Floor: Studio A





Floor Plans

Space for Events
Main Hall
Side Hall

Foyer
Spree Terrace & Outdoor Premises
Ateliers

Cube
Deck
Studios

Services
Information
Floor Plans

Cross-Section

