





# WEL COME

## Authentic areas - great functionality



Today more than ever the ewerk is the place for an attractive and individualized living and working environment. Following the fall of the wall it has also become a place to celebrate. And what started and made history with wild and unorthodox parties has turned into an ambitious place for events meeting the highest demands in functionality and aesthetics after its revitalization in 2006.

Then as now the ewerk is one of the most famous event locations of Berlin which has also earned a high international reputation. On the following pages further information about the ewerk GmbH, responsible for all marketing activities regarding the event areas as well as the design and organisation of high class events, can be found.

The available event areas at ewerk are each allone multifaceted and very individual. Therefore we are able to offer our clients customized proposals regarding the size and style of the respective event area. We have event space that is suitable for virtually every scenario - space that is always a cut above standard offerings.

# HISTORY

Great ideas, grand visions  
and a courage for quality



Across the epochs, the power plant was one of the most interesting sites in the center of Berlin for both its industrial and its cultural history, a constantly defining location and a site for modernity in its time. To preserve and continue this history is one of the essential motivations for the reuse of the power plant

## **This is where the generation of electrical power began in Berlin**

- 1881 Acquisition of the English Edison patent to generate electricity and use light bulbs by Berliner Elektrizitäts-Werke AG
- 1885/6 Construction of the power plant as one of the first two electrical plants in Berlin, introduction of street lighting and later electrical light in private households
- 1889 Expansion of the property to its current size, construction of a second machine hall  
Last preserved evidence of a transformer station in Berlin
- 1926-28 Reconstruction and new construction into the currently still preserved transformer station for inner-city power distribution
- 1985 Abandonment of the active power distribution
- 1987 The power plant is registered as a historic industrial monument

## **Birthplace of techno music – breeding ground for leading technological solutions**

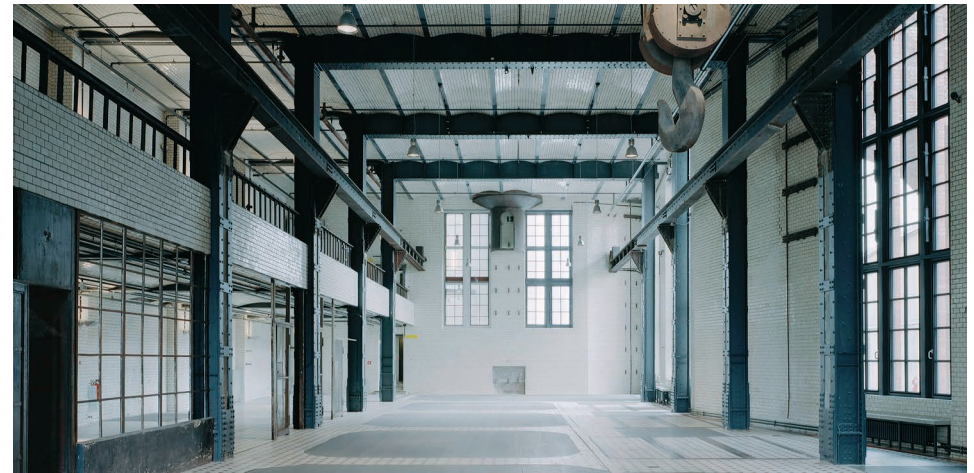
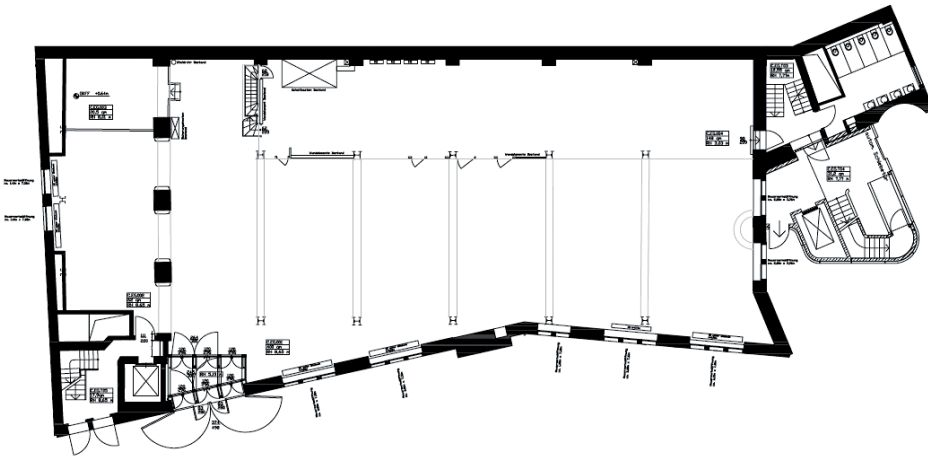
- 1993-97 The building is leased to the “E-Werk” club – the legendary club of the love parade organizers, creation and characterization of techno culture; the building achieves cult status
- 2001 Acquisition by SPM Real Estate GmbH
- 2002/3 Beginning of the modification process from E-Werk to ewerk
- 2004/5 Conclusion of the modification process, move into the newly created office spaces and beginning of a public use of the old industrial halls

Since June 2005, the ewerk has been used as an event location for various events in its current condition.

# HALL C

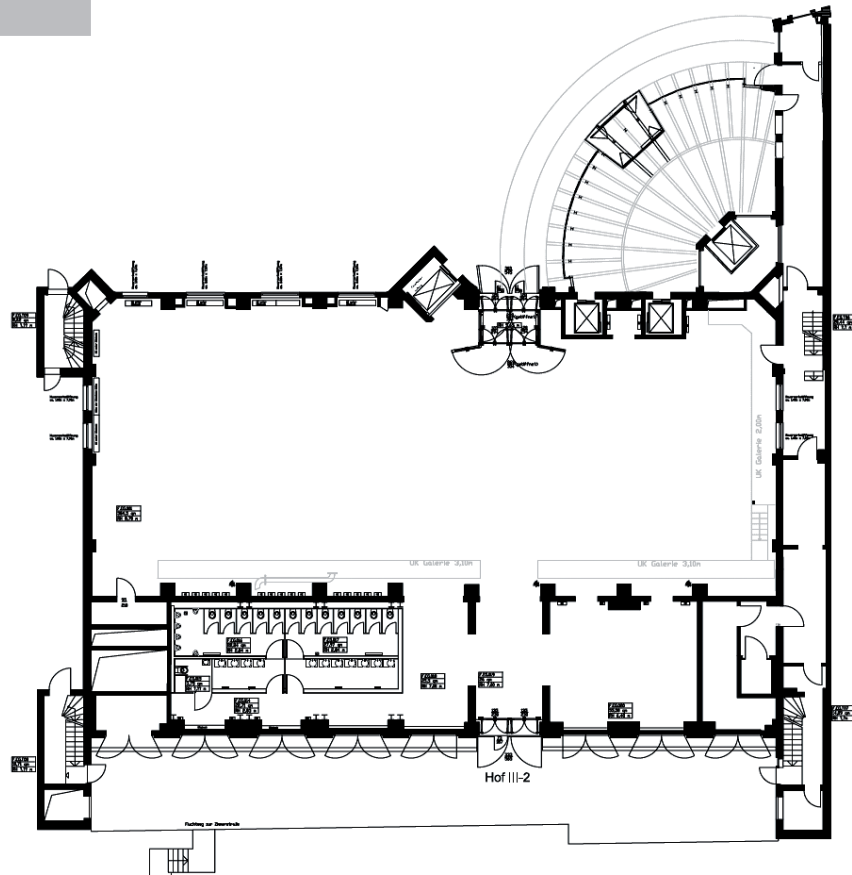
## A hall of character

In this hall with the white tiles, the former club with the historic crane, industrial charm encounters the modern Zeitgeist. Hall C has ideal conditions for such functions as standing receptions, parties and exhibitions.



□ Area:	Ground floor approx. 600 m <sup>2</sup> , second floor approx. 180 m <sup>2</sup> , plus auxiliary areas and WCs
↑ High:	approx. 9,0m
⋮ Capacity:	approx. 900 people
▤ Parliamentary::	approx. 200 people
▥ With rows of seats:	approx. 320 people
⊙ Banquet:	approx. 220 people (round tables for ten)
■ Possible stage size:	8 m x 6 m (maximum)

# HALL F



## The functional miracle

This modern, multifunctional hall offers enough room to play for a wide range of events from a seated dinner to a party, concerts, fashion shows or award ceremonies.

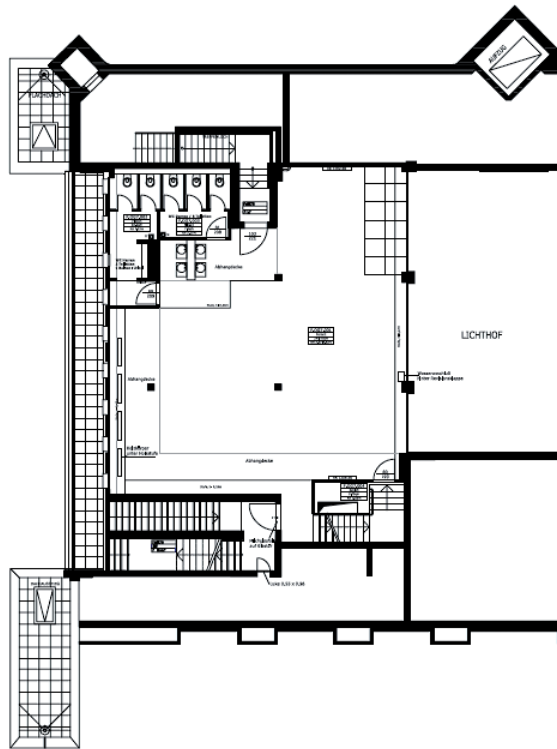


- Area: Ground floor approx. 600 m, auxiliary areas, bathroom facilities, court III. 2 approx. 150 m<sup>2</sup>
- ↑ High: approx. 9,0m
- ⋮ Capacity: approx. 900 people
- ▤ Parliamentary: approx. 350 people
- ▥ With rows of seats: approx. 650 people
- ⊗ Banquet: approx. 380 people (round tables for ten)
- Possible stage size: 12 m x 10 m (maximum)

# SKY LOUNGE

The 35 m high, architecturally modern roof patio with a lounge offers a breath-taking view of the capital. Whether it's a summer party or Christmas celebration, it's always fun to celebrate in this environment.

## 360 degrees of Berlin



- Exterior area: East patio approx. 330 m<sup>2</sup>, west patio approx. 80 m<sup>2</sup>
- Interior area: upper floor 8 approx. 135 m<sup>2</sup>, upper floor 7 approx. 130 m<sup>2</sup>, plus WCs
- ↑ High: approx. 3.0 m
- ⋯ Capacity: approx. 200 people
- ⋮ With rows of seats: unsuitable, but 40 to 50 people possible
- ⋮ Conference situation: 30 people per floor
- ⊙ Banquet: approx. 80 people (round tables for ten)



# AREAS

Space  
for individuality



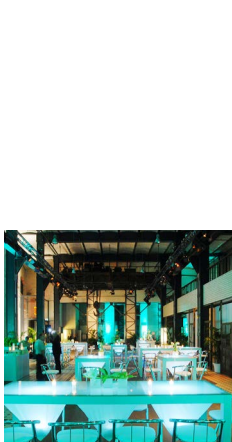
**Canopies and tents** • If you are considering connecting the halls with each other through a walkway or if you need a garden tent, we will be glad to help you with your plans. Details about our UFO Walk - UFO-Walk-One-Sheet – and our own onsite hall connection - Hallenverbindung-One-Sheet - can be found at <http://www.ewerk.net/downloads.0.html>. We will be glad to inform you of the particular costs by providing you with a quote.

**Production office** • We can rent you a fully furnished production office on the premises (Court 2). The office is equipped with two work spaces, a telephone, fax and Internet connection as well as a printer. For more information, please refer to the Production-Office-One-Sheet at the following link: <http://www.ewerk.net/downloads.0.html>

**Parking areas** • You can accommodate up to 4 delivery or technical vehicles on the premises without charge. Our entire service portfolio can be viewed here (alternativ: following this link): [www.ewerk.net/uploads/media/ewerk\\_Leistungsuebersicht.pdf](http://www.ewerk.net/uploads/media/ewerk_Leistungsuebersicht.pdf)



# MOODS





# CON DI TIONS



One rental day is generally considered to range from 12 noon on the event day until 8 a.m. on the following day. If no event takes place on the premises on the day before, earlier access to the location is permitted upon approval.

Position	Rental price Event day	Rental price Setup or breakdown day
Halle C	EUR 10.000,00	EUR 5.000,00
Halle F	EUR 10.000,00	EUR 5.000,00
Skylounge	EUR 5.000,00	EUR 2.500,00
Production office S	EUR 300,00	EUR 300,00
Production office L	EUR 750,00	EUR 750,00

**Right to exclusivity** • You have the option of renting the entire location exclusively and only use certain areas. 50% of the daily rental rate (for the event day) will be charged for the unused spaces. If the spaces will be used unexpectedly after all, the full listed rental price will be charged after the event.

**Additional costs** • Variable costs are added to the stated rental costs, which vary according to your event concept and which therefore can only be calculated after the actual use. These costs include:

A potential intermediate cleaning at EUR 24.00 per hour/person  
The final cleaning at EUR 24.00 per hour and person  
Bathroom personnel at EUR 22.00 per hour and person  
Security personnel at EUR 24.00 per hour and person

All prices are net prices; value added tax will be added. The rental prices include all operating and additional costs.

# CON TACT CT

Creating beauty by  
counteracting transcience



To inquire about the scheduling of events or viewing appointments, please contact:

Tel.: +49 (0)30-200 756 56

Fax: +49 (0)30-200 756 60

Mail: [event@ewerk.net](mailto:event@ewerk.net)

**Catering, furnishings, technical equipment •**

We are not bound to any service provider at the ewerk, i.e. you're welcome to carry out your event with the service providers of your choice. In the framework of the event, we will provide you with the necessary infrastructure (electricity and water connections, backstage areas, etc.), which the service providers that you hire may use accordingly.

Further information material regarding the history of the ewerk including all measurements, suspension points, electricity and water supplies along with photos, a virtual tour of the different premises as well as our terms and conditions can be found at [www.ewerk.net](http://www.ewerk.net).

The general terms and conditions of the ewerk GmbH apply.